



New Jersey Natural Gas Advantage

For Your Business

Good Things Come in Threes



NJNG ranks “Highest in Customer Satisfaction With Business Natural Gas Service in the Eastern U.S., Three Years in a Row.”*

*New Jersey Natural Gas received the highest numerical score in the Eastern U.S. in the proprietary J.D. Power and Associates 2011-2013 Business Customer Satisfaction StudiesSM. Studies based on 10,156 (Business Study) online interviews with respondents in the Eastern U.S. (CT, DC, MD, MA, NH, NJ, NY, PA, RI, VA). Proprietary study results are based on experiences and perceptions of business customers surveyed May 2012–August 2012 and October 2012–January 2013. Your experiences may vary. Visit jdpower.com.

Turbo Charge Your Energy-Saving Efforts with ENERGY STAR[®]

The U.S. Environmental Protection Agency (EPA) recently upgraded its energy management and tracking tool, ENERGY STAR Portfolio Manager, raising the bar on energy performance for commercial buildings. The new and improved Portfolio Manager is designed to help you identify energy-efficiency priorities as a step toward achieving the President’s call to make commercial buildings at least 20 percent more energy-efficient by 2020.

Strategic Management Decisions Made Easier

Now more user friendly, this tool of choice is the only no-cost resource that enables you to manage buildings across their lifecycle from design through occupancy. Moreover, the new and improved Portfolio Manager delivers enhanced data-sharing capabilities and better reporting along with nearly 150 performance metrics. With Portfolio Manager you can:

- Manage energy and water consumption
- Compare your building’s energy performance to those nationwide with similar features
- Measure your carbon footprint
- Set investment priorities
- Verify and track savings
- Share your performance data with others

By identifying relative energy performance of buildings, you can develop strategies and allocate necessary resources to under-performing buildings while becoming more competitive and improving their environmental performance. A recent study by the EPA indicates that there are benefits to measuring and tracking a building’s energy performance with Portfolio Manager – buildings that benchmarked consistently over a three-year period reported an average energy reduction of 2.4 percent annually.

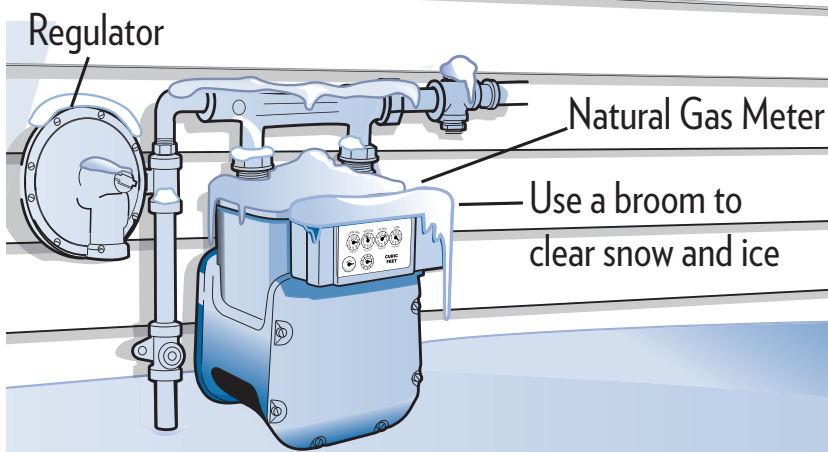
Get Started!

Join 40 percent of U.S. commercial building space that already tracks their performance with Portfolio Manager. Go to the Buildings & Plants section at energystar.gov and click on Portfolio Manager.

While there, look for sector-specific resources to engage energy decision makers and facility managers in continuous energy improvement. You’ll find comprehensive resources and valuable tools, including technical guidance and training and access to educational outreach materials, and a means to connect with a large partner network.

Not ready to turbo charge your energy savings with Portfolio Manager?

Assess your facility’s performance with Energy Benchmarking from New Jersey’s Clean Energy Program[™] (NJCEP). This free service is a valuable tool that tracks and scores the energy cost and consumption trends of your building, providing you with a detailed report on how fuel is used, suggestions for improving operations and maintenance along with valuable information on energy-efficient technologies and financial incentives designed to offset the costs of energy-efficiency projects. Visit njcleanenergy.com/benchmarking to learn more.



Attention to Safety:

Take Care of Your Natural Gas Meter this Winter

When winter weather arrives, it is important that our meter readers have access to your natural gas meter in case of an emergency or routine maintenance. So, remember these important safety tips:

- **Ensure there is a clear path to your meter and regulator and keep the area around them free of snow and ice**
- **Use a broom to carefully remove snow from your meter**
- **Take care when shoveling, plowing or using a snow blower in the area around your meter and regulator**
- **Carefully remove ice that is hanging from your roof over the meter and regulator**
- **Do not use sharp tools or instruments on or near the meter or regulator**

Give Warm Wishes with an NJNG Gift Certificate

Whether you are looking for the perfect holiday gift or just want to help a neighbor or family member in need ... NJNG has the perfect idea for you. A Warm Thoughts gift certificate can be purchased for any NJNG customer for any amount you choose. It's easy. Just visit one of our business offices or go to the payment options quick link at njng.com and click on gift certificate. Follow the instructions to purchase a gift certificate and we'll take care of the rest.

We'll automatically apply the gift payment to the recipient's NJNG account on the date you request. And we'll even send you a Warm Thoughts gift certificate to present to the recipient. For additional information, call 800-221-0051.

How To Reach Us

Call us:

Toll-free: 800-221-0051

People with hearing and speech impairments (TTY/TDD): 800-223-0024

Report a natural gas leak: 800-GAS-LEAK (800-427-5325)

Call before you dig: 811 or 800-272-1000

E-mail us: customerservice@njng.com

Visit our Web site: www.njng.com

Write to us: New Jersey Natural Gas 1415 Wyckoff Road, P.O. Box 1464, Wall, NJ 07719

Are Energy Costs Adding a Significant Burden to Your Family Budget?

NJNG wants to connect qualified families with energy assistance and home energy-improvement programs to help them better manage their home heating costs. So whether you are on a limited income or faced with unanticipated financial hardship, help is available. To determine eligibility requirements visit energyassistance.nj.gov or contact a participating agency near you. For additional information, contact our energy assistance team at 800-221-0051 or energyassist@njng.com.

Low Income Home Energy Assistance Program (LIHEAP)
(Income-based)

Universal Service Fund (USF) *(Income-based)*

Gift of Warmth Fund (GOW) *(Based on financial need)*

Temporary Relief for Utility Expenses (TRUE)
(Based on financial need)

NJ SHARES *(Based on income guidelines and financial need)*
Call 866-657-4273 to find an agency in your area or visit njshares.org.

Lifeline Credit Program *(Seniors and disabled)*
800-792-9745

Comfort Partners *(Income-based weatherization program)*
Call 732-938-1494 or visit the Residential Section of njcleanenergy.com and click the Programs link.

(Participating Agencies)

Middlesex County

Puerto Rican Action Board*
90 Jersey Avenue, New Brunswick, NJ 08901
732-828-4541

Monmouth County

Affordable Housing Alliance (AHA)/ TRUE Program
94 Broad Street
Eatontown, NJ 07724
732-389-2204

20 Gibson Place
Freehold, NJ 07728
732-389-2204

1828 West Lake Avenue
Neptune, NJ 07753
732-389-2204

Morris County

Morris County Organization for Hispanic Affairs
95-97 Bassett Highway, Dover, NJ 07801
973-366-1131

Ocean County

O.C.E.A.N. Inc.
22 Hyers Street, Toms River, NJ 08753
732-244-9041

507 River Avenue, Lakewood, NJ 08701
732-942-3405

*This agency does not accept Gift of Warmth or TRUE Grant applications. Middlesex County residents can apply for GOW and TRUE Grant at AHA