

Meter Read Schedule

NJNG offers the option of reading your own meter. You can avoid a calculated bill and more closely monitor your actual usage by reading your meter on months between NJNG meter reads.

The process is easy. All you need to know is when and how to read your meter and where to submit your read.

Your read cycle _____

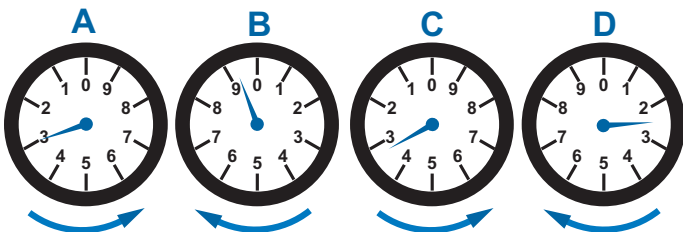
Your meter number _____

Step One: When to Read Your Gas Meter

The timing of your meter read is important. You will need to provide your read by the dates marked with an asterisk (*) on your schedule. NJNG is scheduled to read your meter on the other dates shown.

Step Two: How to Read Your Gas Meter

NJNG uses two kinds of meters for residential customers. The direct dial meter reads like a digital clock. The most common type of meter has four or five clock-type dials as shown below, which are read left to right. When a dial hand is not directly on a number, record the preceding number. **Dial B** reads "9," and **dial D** reads "2." When a dial hand is directly on a number, check the hand on the dial to the right. If it is not on or past zero, record the preceding number. The hand on **dial B** is before zero, so **dial A** reads "2." On **dial D**, the hand is past zero, so **dial C** reads "3." The meter read below is "2932." To calculate your gas usage, subtract your last meter read from your current read.



Cycle #14 2010 Schedule

Read-By Date	Read	Read-By Date	Read
01/26*	_____	07/27*	_____
02/25	_____	08/24	_____
03/26*	_____	09/23*	_____
04/27	_____	10/25	_____
05/26*	_____	11/23*	_____
06/25	_____	12/27	_____

* Customer meter read date

NJNG will read your meter on other dates shown.

Step Three: Where to Submit Your Read

When submitting your read, you will need to provide the following information:

Name
Address
Meter number

Meter read
Date of read

Choose the Method That Is Most Convenient:

Online: njliving.com (My Account Services)

E-mail: meterreading@njng.com

Fax: 732-370-4564

Phone: 1-800-221-0051 (follow prompts 3,3,3)
Customer Service: 1-800-221-0051