

## Meter Read Schedule

NJNG offers the option of reading your own meter. You can avoid a calculated bill and more closely monitor your actual usage.

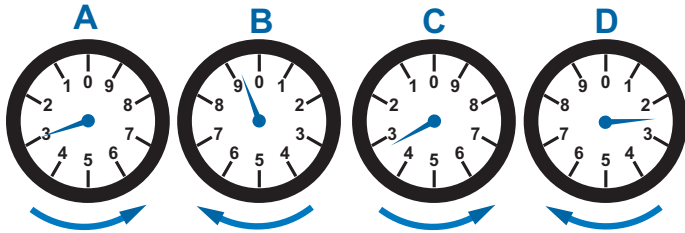
**The process is easy.** All you need to know is when and how to read your meter and where to submit your read.

Your read cycle \_\_\_\_\_

Your meter number \_\_\_\_\_

### Step One: How to Read Your Gas Meter

NJNG uses two kinds of meters for residential customers. The direct dial meter reads like a digital clock. The most common type of meter has four or five clock-type dials as shown below, which are read left to right. When a dial hand is not directly on a number, record the preceding number. **Dial B** reads “9,” and **dial D** reads “2.” When a dial hand is directly on a number, check the hand on the dial to the right. If it is not on or past zero, record the preceding number. The hand on **dial B** is before zero, so **dial A** reads “2.” On **dial D**, the hand is past zero, so **dial C** reads “3.” The meter read below is “2932.” To calculate your gas usage, subtract your last meter read from your current read.



### Step Two: Where to Submit Your Read

When submitting your read, you will need to provide the following information:

<b>Name</b>	<b>Meter read</b>
<b>Address</b>	<b>Date of read</b>
<b>Meter number</b>	

Cycle – 1		2011 Schedule	
<u>Read-By Date</u>	<u>Read</u>	<u>Read-By Date</u>	<u>Read</u>
<b>01/07</b>	_____	<b>07/08</b>	_____
<b>02/07</b>	_____	<b>08/05</b>	_____
<b>03/09</b>	_____	<b>09/06</b>	_____
<b>04/07</b>	_____	<b>10/05</b>	_____
<b>05/09</b>	_____	<b>11/04</b>	_____
<b>06/08</b>	_____	<b>12/07</b>	_____

#### Choose the Method That is Most Convenient:

**Online:** [njliving.com](http://njliving.com) (My Account Services)

**E-mail:** [meterreading@njng.com](mailto:meterreading@njng.com)

**Fax:** 732-370-4564

**Phone:** 800-221-0051 (follow prompts 3,3,3)  
**Customer Service:** 800-221-0051